

# \$538,500 - 303 Shady Grove Parkway, Burnet

MLS® #2238595

## \$538,500

3 Bedroom, 2.00 Bathroom, 2,392 sqft  
Residential on 0.46 Acres

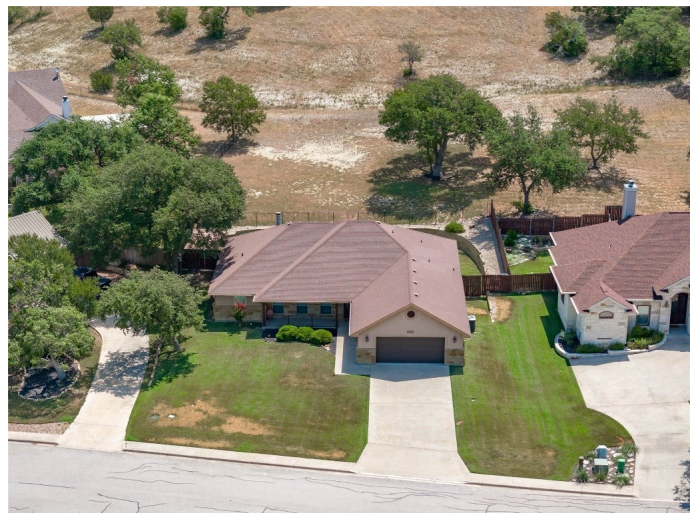
Hills Of Shady Grove, Burnet, TX

Step into this priest home in The Hills of Shady Grove. The spacious living area boasts vaulted ceilings, stone wood burning fireplace (wired for TV Mpunt), and beautiful wood plank tile floors throughout living, dining, kitchen, and laundry. Kitchen and living area are open to designated dining space. Kitchen is equipped with beautiful custom wood cabinetry, granite countertops, and spacious pantry. Enjoy the privacy of a split bedroom floor plan. Master suite provides unusually ample square footage in the spacious bedroom, large on-suite, and massive walk in closet. Custom plantation shutters and unique crown molding throughout. Enclosed sunroom on back of living area comes equipped with custom window shades and built in mini fridge. Home has a water softener, and ring doorbell. Beautiful landscaped yard with sprinkler system front and back. Enjoy privacy of evenings on the spacious back porch as property backs up to unoccupied land.

Built in 2013

## Essential Information

MLS® #	2238595
Price	\$538,500
Bedrooms	3
Bathrooms	2.00
Full Baths	2
Square Footage	2,392



Acres	0.46
Year Built	2013
Type	Residential
Sub-Type	Single Family Residence
Status	Active

### **Community Information**

Address	303 Shady Grove Parkway
Area	BU
Subdivision	Hills Of Shady Grove
City	Burnet
County	Burnet
State	TX
Zip Code	78611

### **Amenities**

Utilities	Cable Available, High Speed Internet Available, Underground Utilities
Features	Curbs
Parking	Garage Faces Front, Garage, Driveway
Garage Spaces	2
View	Hills, Neighborhood
Waterfront	None

### **Interior**

Interior	Carpet, Tile
Appliances	Electric Range, Electric Water Heater, Refrigerator, Wine Refrigerator
Heating	Central
Fireplace	Yes
# of Fireplaces	1
Fireplaces	Wood Burning
# of Stories	1
Stories	One

### **Exterior**

Exterior Features	Rain Gutters, Lighting
Lot Description	Back Yard, Front Yard, Gentle Sloping, Landscaped, Sprinklers Automatic, Cleared, Trees Large Size
Roof	Composition
Construction	HardiPlank Type, Stone, Stucco

Foundation                      Slab

**School Information**

District                      Burnet ISD  
Elementary                      Burnet  
Middle                      Burnet (Burnet ISD)  
High                      Burnet

**Additional Information**

Date Listed                      July 28th, 2023  
Days on Market                      294

Property Listed by: Thrive RealtyThe information being provided is for consumers' personal, non-commercial use and may not be used for any purpose other than to identify prospective properties consumers may be interested in purchasing. Based on information from the Austin Board of REALTORS® (alternatively, from ACTRIS) from May 17th, 2024 at 1:45am CDT. Neither the Board nor ACTRIS guarantees or is in any way responsible for its accuracy. The Austin Board of REALTORS®, ACTRIS and their affiliates provide the MLS and all content therein "AS IS" and without any warranty, express or implied. Data maintained by the Board or ACTRIS may not reflect all real estate activity in the market. All information provided is deemed reliable but is not guaranteed and should be independently verified.