

\$12,250,000 - 5705 Scenic View Drive, Austin

MLS® #5834605

\$12,250,000

7 Bedroom, 9.00 Bathroom, 10,450 sqft
Residential on 2.40 Acres

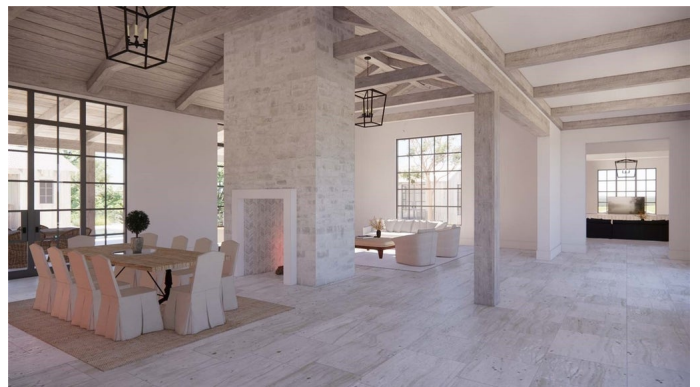
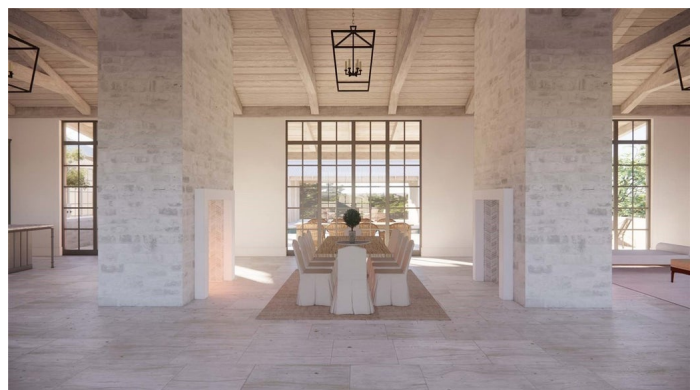
Tipco Sub, Austin, TX

In collaboration with Taylor Wilson Custom Homes and award-winning Architect Sam Burch, this new construction in Scenic View Westlake sits on two combined lots made up of 2.4 gently-sloped acres. Set against the rolling hills of the Wild Basin Preserve, the property will feature fantastic indoor and outdoor living spaces to host family and friends at the pool, spa and cabana or full-size sport court and pavilion. Britt Design Group will complete the interior finishes that will feature seven bedrooms, six full and three half baths, five living areas and a four-car garage. 10,450 square feet per builder - Buyer should independently verify. Expected Completion Early 2023.

Westlake's™ Newest Neighborhood at Scenic View -

This sophisticated community connects luxury Westlake living with the easy access to downtown Austin through two gated entrances on Far Gallant and Scenic View Drive. Just far enough out from Westlake's™ center Scenic View allows residents a sense of privacy, while remaining close enough to enjoy modern conveniences. Scenic View is "The New Westlake" where the opportunity to own is set in a landscape of greenbelts and the conveniences of Austin's™ most cherished lifestyle attractions.

Reside in a sophisticated community of Scenic View with more than 75 acres of hill country



nestled against the Wild Basin Preserve between Davenport Ranch and Toro Canyon. Private streets are protected by two gated entrances, granting the utmost privacy and peace of mind. With only 20 estate sites, Scenic View offers a close-knit neighborhood atmosphere featuring private sidewalks and greenbelts for playing with pets, family or entertaining. *Tax values are estimated 2021 lot values without improvements.*
MORE at ScenicViewDriveResidence.com

Built in 2022

Essential Information

MLS® #	5834605
Price	\$12,250,000
Bedrooms	7
Bathrooms	9.00
Full Baths	6
Half Baths	3
Square Footage	10,450
Acres	2.40
Year Built	2022
Type	Residential
Sub-Type	Single Family Residence
Status	Active

Community Information

Address	5705 Scenic View Drive
Area	8E
Subdivision	Tipco Sub
City	Austin
County	Travis
State	TX
Zip Code	78746

Amenities

Utilities	Electricity Available, Natural Gas Available, Underground Utilities
Features	Common Grounds/Area, Community Mailbox, Gated

Parking	Attached, Garage, Garage Faces Side
Garage Spaces	4
View	Trees/Woods
Waterfront	None
Has Pool	Yes

Interior

Interior	Tile, Wood
Appliances	Built-In Range, Dishwasher, Disposal, Dryer, Exhaust Fan, Microwave, Refrigerator, See Remarks, Stainless Steel Appliance(s), Washer
Heating	See Remarks
Fireplace	Yes
# of Fireplaces	2
Fireplaces	Dining Room, Living Room, Outside
# of Stories	2
Stories	Two

Exterior

Exterior Features	Private Yard, See Remarks, Uncovered Courtyard
Lot Description	Back Yard, Front Yard, Sprinklers Automatic, Trees Large Size
Roof	Metal
Construction	Stone Veneer, Stucco
Foundation	Slab

School Information

District	Eanes ISD
Elementary	Bridge Point
Middle	Hill Country
High	Westlake

Additional Information

Date Listed	October 29th, 2021
Days on Market	208

Property Listed by: Moreland Properties
The information being provided is for consumers' personal, non-commercial use and may not be used for any purpose other than to identify prospective properties consumers may be interested in purchasing. Based on information from the Austin Board of REALTORS® (alternatively, from ACTRIS) from May 25th, 2022 at 1:47pm CDT. Neither the Board nor ACTRIS guarantees or is in any way responsible for its accuracy. The Austin Board of REALTORS®, ACTRIS and their affiliates provide the MLS and all content therein "AS IS" and without any warranty, express or implied. Data maintained by the Board or ACTRIS may not reflect all real estate activity in the market. All information provided is deemed reliable but is not guaranteed and should be independently verified.